

Easy-Living Apartments

City I

EASY-LIVING

LUCERNE

CITY

APARTMENTS I

Habsburgerstrasse 5A

CH – 6003 Luzern

+41 (0)41 250 46 48

info@easy-living.ch

Dear guests

**In this booklet you can
find some helpful
information concerning
our buildings and
services.**

Emergency numbers

144 **Ambulance**

117 **Police**

118 **Fire Fighters**

+41 41 205 11 11 **Emergency room Kantonsspital Luzern (Hospital)**
Spitalstrasse, 6004 Luzern
Sundays - Fridays 08:00 am – 11:00 pm 24h hotline
Saturdays 08:00 am – 01:00 am 24h hotline
For severe and/or life-threatening
emergencies or accidents.

+41 41 211 14 44 **Permanence Medical Center Luzern**
(At the Lucerne main station, underground level)
Monday - Tuesday 07:00 am – 11:00 pm
Friday - Sunday Open 24 hours
For less severe and urgent medical problems
or tooth ache.

0900 11 14 14 **Lucerne doctors, Emergency telephone number**
(for extra charge) Helpdesk / Consultation

145 **Swiss toxicological emergency information centre**

0848 582 489 **Dentists, Emergency telephone number**

+41 41 220 13 13 **Pharmacy**
BENU Bahnhofsapotheke & Drogerie is a pharmacy
located at the Lucerne main station, underground
level.

Day of departure

Check-out time: 10:00 am

Check-out is possible until 10:00 am. Please leave the apartment on time. **Late check-out is dependant on the availability.** If you would like to have a late check out, please contact the reception.

Key Deposit

Please return the key back to the key box you got it from when checking-in and hang it on the hook of the right apartment number.

Cleaning at the Check-out

The dishes and cutlery must be cleaned/dried. Please leave all the used towels on the bathroom floor and remove the bed sheets. A final cleaning fee, the amount of which varies depending on the work involved, is only charged if the room was left improperly or excessively messy.

Services

Internet Access / Wi-Fi

You can use our free & unlimited internet access in the apartment.

Towels / Sheet Changing

If you wish, we are pleased to change your towels or bed sheets daily (for an additional charge). Please contact our reception staff.

Cleaning

Cleaning every 14 days with new linen and towels is included (unless something else has been agreed on).

If you would like to have extra cleaning of your apartment during your stay, please contact the reception. Cleaning charge is CHF 60.- / hour + CHF 10.- fixed charge.

Parking

We do not have any parking located onsite. There is multiple parking buildings located near the Easy Living Lucerne City Apartments, more information: <https://www.parking-luzern.ch/en/Luzerner-Parkhaeuser-1>.

The blue parking zones are in operation from Monday to Saturday between 8 a.m. and 7 p.m. during this time you can park here for max. one hour. However, because you can always set the parking disc to the next half or full hour upon arrival, so if you arrive at 09.01 in the morning, you can set the time to 09.30 on the parking disc. Please be aware on the blue zone there might be additional signs stating parking regulations, so please read the signs before parking your car.

Easy-living does not take any responsibility for fines of false parking.

Good to know

Current Voltage

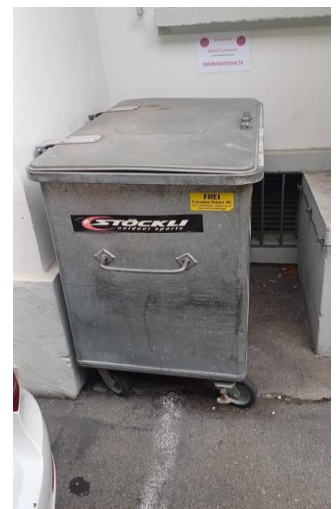
220 V alternating current.

Drinking Water

In Switzerland the water from the tap is safe to drink.

Waste Disposal and Rubbish Bags

During your stay and on the check-out you can dispose the full blue rubbish bags, inside the container on the courtyard, behind the house. If you need more rubbish bags, you can buy them in the supermarket Migros or COOP (only 2 minutes walk away). Please note that only **the blue rubbish bags** will be accepted.



Food & Beverage Shop

You will find the **COOP supermarket** nearby on Winkelstrasse 56/58. The shop sells the most important products: variety of different breads, dairy products, beverages, non-food products etc.

Opening hours: Mon-Wed, Fri: 7:00 am – 18:30 pm.

Opening hours: Thu: 7:00 am – 20:00 pm.

Opening hours: Sat: 7:00 am – 16:30 pm.

The shopping centre at Lucerne station is open 365 days a year, from 9 am (Sunday 10 am) to 8 pm, offering a wide range of services and shops in a central location. Here you will find a pharmacy, takeaway-food stores and various shops and services.

Easy-Living Apartments

City I

Restaurants

There is a great amount of restaurants to choose from nearby.

Public Holidays

On public holidays the most stores and facilities might be closed, so please check the special opening hours on the following days:

1 st of January	(New Year's Day)	1 st of August	(Swiss National Day)
2 nd of January	(Berchtol's Day)	15 th of August	(Assumption of Mary)
Friday before Easter	(Good Friday)	1 st of November	(All Saints)
Monday after Easter	(Easter Monday)	25 th December	(Christmas)
39 days after Easter	(Ascension Day)	31 st of December	(New Year's Eve)
11 days after Ascension	(Whit Monday)		

Lucern city center / Main station by a bus / foot

By walking

The center of the city is about 5 min. walk away. The main station can be reached within 3 minutes.

Bus

The nearest bus station, “**Bundesplatz**” is only 200m walk from the apartment. With the **busses no. 4, 6, 7, 8, & 20** you can get to the train station (about 2 minute ride). The bus schedule you can find also inside this folder. It is possible to get a free busticket for the Zone 10 (Lucerne city area), please request in advance.

Taxi

By the main entrance of the Lucerne Main Station you can find the taxi stand. If you need a taxi:

Taxi Ernst Hess AG, Telefon: +41 41 310 10 10

Rail Connections & Tickets

0900 300 300 Rail Service + Train information
(CHF 1.19/min, Swiss landline)

daily/24 h
www.sbb.ch

You can buy the tickets directly at the train station.

Information of the region

Information about **excursions, car rental, tickets, etc.** are provided at the tourist information center at the Lucern main station.

Luzern Tourismus AG | Zentralstrasse 5 | 6002 Luzern |

Tel. +41 41 227 17 17 | luzern@luzern.com | www.luzern.com

Monday - Friday **08:30 am - 07:00 pm**

Saturday **09:00 am - 07:00 pm**

Sunday **09:00 am - 05:00 pm**

Scan the QR-Code to visit our homepage and our social media sites. Here you can find more information about things to do around Luzern and surrounding areas.



Easy-Living.ch

House Rules

Payment

The reservation has to be paid latest on the arrival, can also be prepaid. We accept Mastercard & Visa.

Occupancy

The number of occupants (excluding infants up to 3 years old) of the property must not exceed the number stated in the rental agreement.

Disturbance

Any sort of disturbance, such as loud music, parties etc. is strictly forbidden. Please from 9 pm onwards it is the time to be quiet general inside the building. Please respect the house rules.

Smoking

Smoking is strictly forbidden in all apartments, rooms and corridors.

Environmental Protection

... is important to our company.

Our contribution: Changing of towels at variable intervals, thermostatic regulation on our radiators, waste separation/recycling etc.

Make your contribution: Please turn off the lights and the TV when you leave the apartment. Turn off the taps completely after every use.

Thank you very much for supporting us.

Reception opening hours

Monday to Friday

10:00 am – 6:00 pm

Saturday and Sunday

Closed

If you have any questions or you need help,
Please contact us via email (Address below).

(in urgent matters also outside of our opening hours)

EASY-LIVING

Lindenstrasse 46

CH – 6015 Luzern

+41 (0)41 250 46 48

info@easy-living.ch