

Easy - living Lucerne

It is our guiding principle to try and make the lives of our guests a bit more pleasant, less complicated and less stressful.

Our house has tenderly been fixed up and now appears in a more urban context. Our rooms exude a feeling of cosiness and at the same time an extra-ordinary urban flair. They are furnished classily and practically. The discreet design and elegant colours make a stay here absolutely enjoyable. Our offers differ in terms of extent and value and provide an ideal solution for any demand and any budget.

easy - living Business Apartment

MÖBLIERTES
WOHNEN AUF ZEIT.
Lösungsidee für Unternehmen

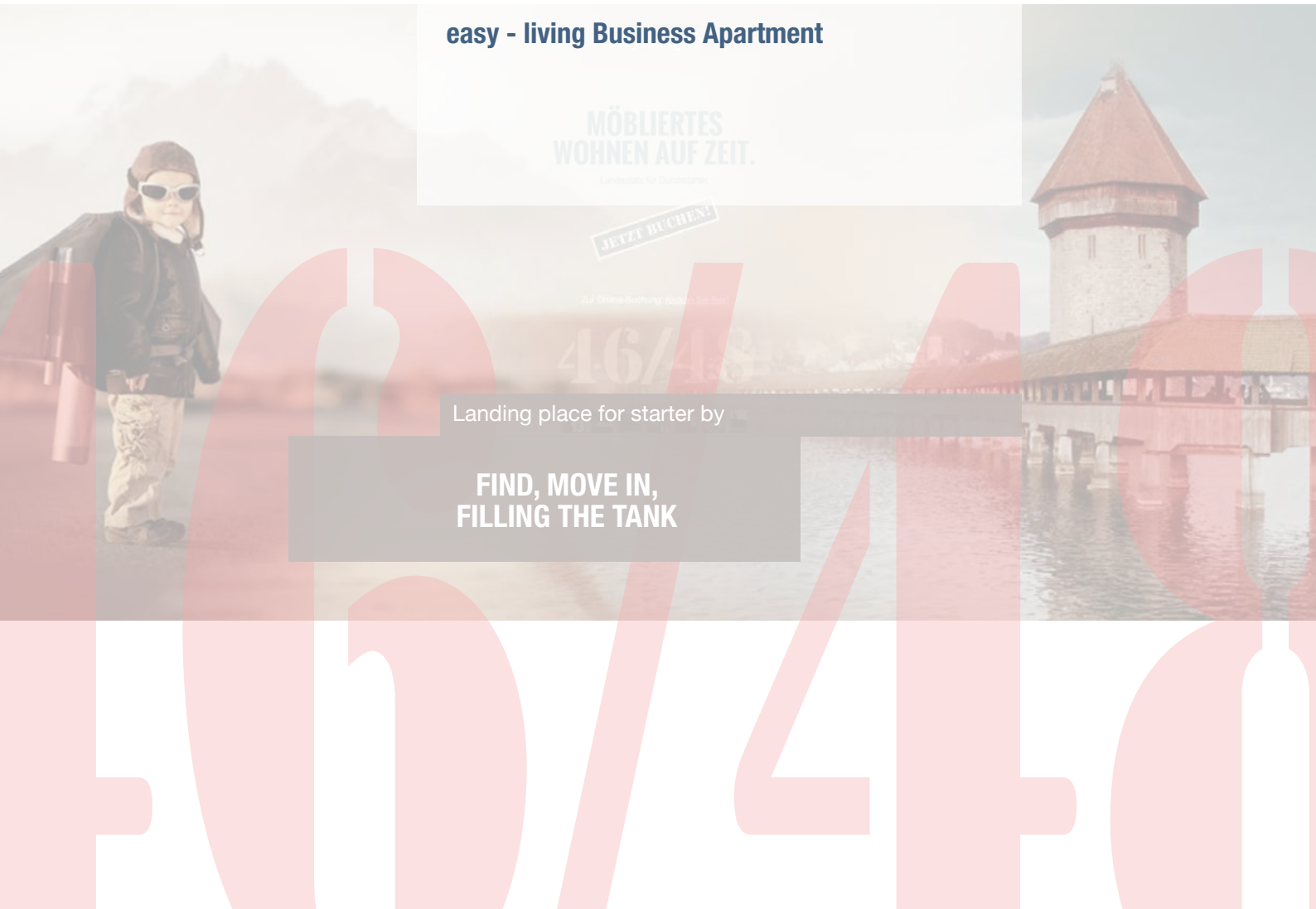
JETZT BUCHEN!

Zur Online-Buchung: [klicken Sie hier](#)

46/48

Landing place for starter by

**FIND, MOVE IN,
FILLING THE TANK**

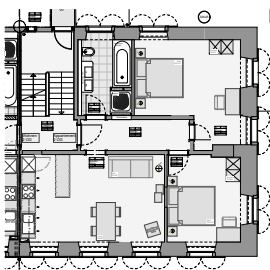
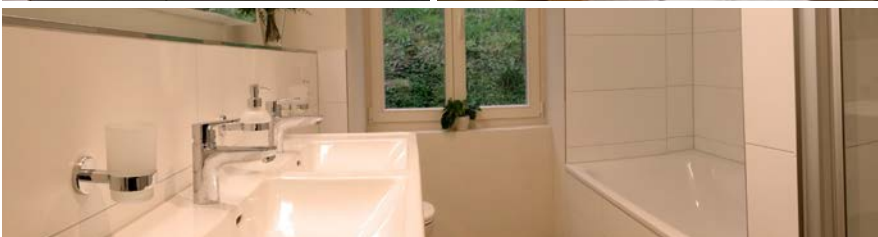


Lindenstrasse 29
6015 Lucerne
041 250 46 48
info@easyliving.ch

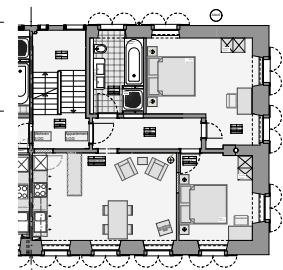
reception opening times
Monday to Friday
09:00 -10:00 / 16:00 – 18:00

easy - living Business Apartment

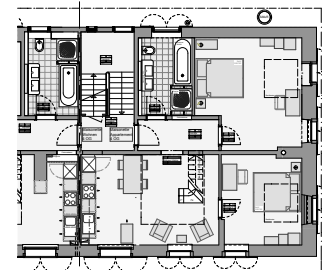
A perfectly equipped apartment with two bedrooms in an elegant style



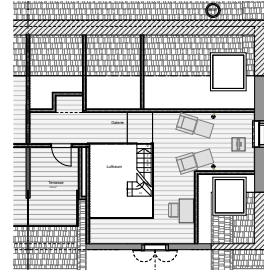
second floor



third floor



fourth floor maisonette



Furnishing and equipment

- * Large living room with open-plan kitchen
(equipped with fridge, glass ceramic cooker, conventional oven, kettle, coffee machine, crockery and kitchen utensils)
- * Two king size bedrooms with wardrobe and desk
- * Bathroom with bath and shower
- * Wooden table for 4 guests in the living room
- * Armchairs
- * Flat Screen TV

Services and amenities

- * Bedlinen (changed every two weeks)
- * Bathroom towels (weekly for a stay from 6 nights)
- * Weekly cleaning
- * Parking Space
- * Free W-LAN
- * Coin operated washing machine and tumbler

Further Information

Shopping

There are two shops in Lindenstrasse which are open between 6:00 a.m. and 10:00 p.m.

Restaurant

You are recommended to visit the gartenHAUS 1313 in Lindenstrasse, where you can enjoy traditional Swiss food at midday between 11:00 a.m. and 2:00 p.m. and in the evening between 6:00 p.m. and midnight.

Parking

Parking spaces must be reserved in advance and availability is limited. Costs CHF 20.- per day. A parking lot is included with the Business Apartment.

Public Transport

In immediate proximity (200 meters) there is a bus stop called Fluhmühle. The Emmenbrücke train station is approximately 2 km and the main Lucerne station is approximately 3 km away. Arrival and departure by public transport is possible without difficulty. www.vbl.ch (Fluhmühle Luzern/Reussbühl); sbb.ch.

Prices

See enclosed price list or at: easy-living.ch

We look forward to hearing from you, to receiving your reservation or to sending you an offer.

phone: +41 (0)41 250 46 48

mail: info@easyliving.ch

more online at www.easy-living.ch

Your easy – living Team Lucerne

