

## Easy - living Lucerne

It is our guiding principle to try and make the lives of our guests a bit more pleasant, less complicated and less stressful.

Our house has tenderly been fixed up and now appears in a more urban context. Our rooms exude a feeling of cosiness and at the same time an extra-ordinary urban flair. They are furnished classily and practically. The discreet design and elegant colours make a stay here absolutely enjoyable. Our offers differ in terms of extent and value and provide an ideal solution for any demand and any budget.

## easy - living Budget Rooms

MÖBLIERTES  
WOHNEN AUF ZEIT.

Lösungsidee für Quereinsteiger

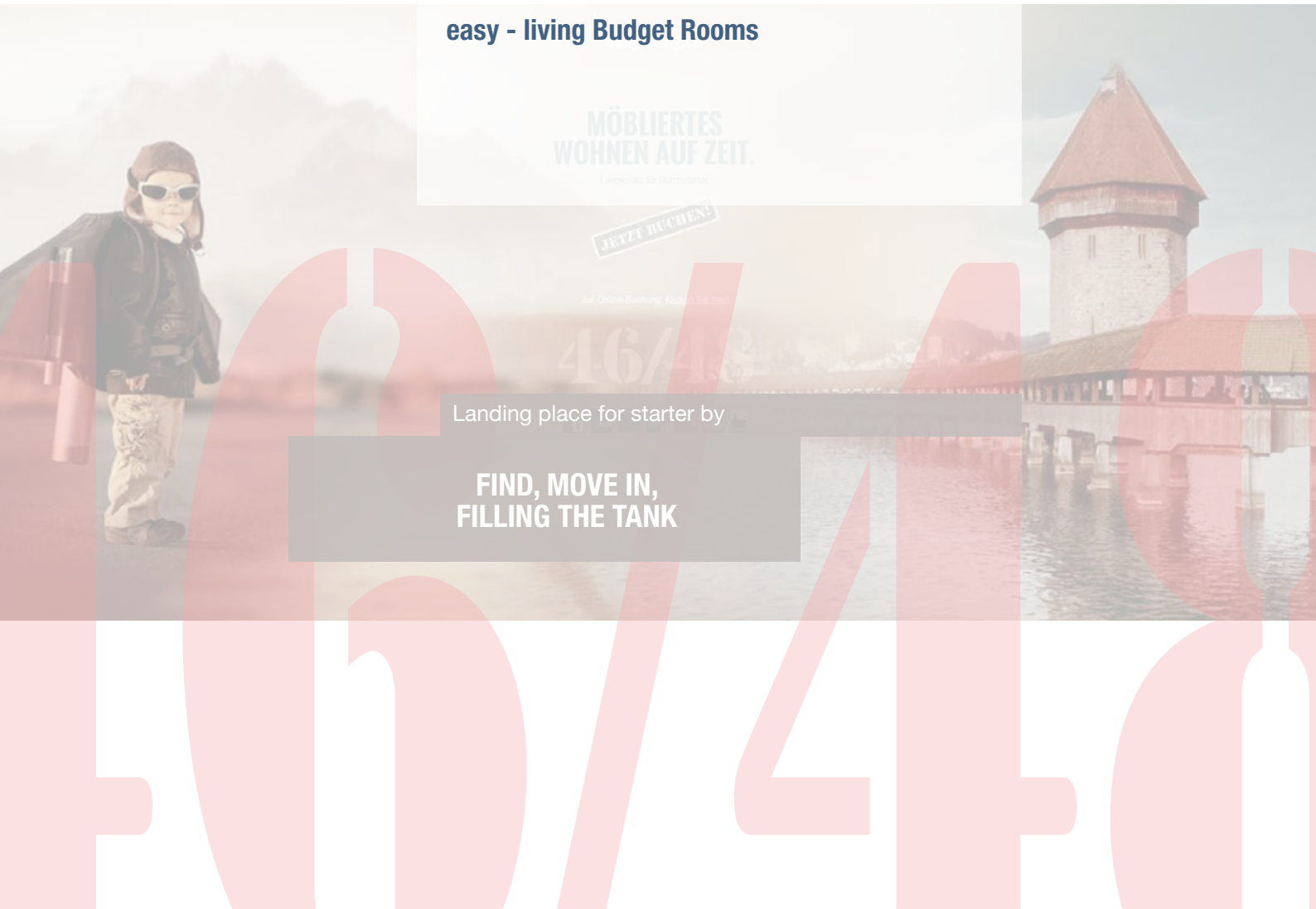
**JETZT BUCHEN!**

Zur Online-Buchung: [klicken Sie hier](#)

46/48

Landing place for starter by

**FIND, MOVE IN,  
FILLING THE TANK**



Lindenstrasse 29  
6015 Lucerne  
041 250 46 48  
info@easyliving.ch

reception opening times  
Monday to Friday  
09:00 -10:00 / 16:00 – 18:00



## easy - living Budget Rooms

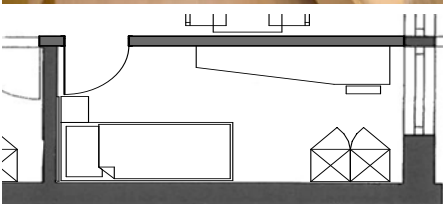


### Furnishing and equipment

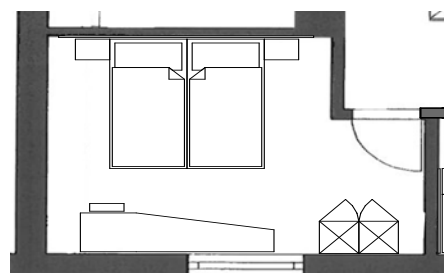
- \* Fully-equipped single- and double rooms
- \* Communal bathroom with bath or shower shared with other rooms

### Services and amenities

- \* Bedlinen (changed every two weeks)
- \* Bathroom towels (weekly for a stay from 6 nights)
- \* Weekly cleaning
- \* Parking Space
- \* Free W-LAN
- \* Coin operated washing machine and tumbler



single room



double room

## Further Information

### Shopping

There are two shops in Lindenstrasse which are open between 6:00 a.m. and 10:00 p.m.

### Restaurant

You are recommended to visit the gartenHAUS 1313 in Lindenstrasse, where you can enjoy traditional Swiss food at midday between 11:00 a.m. and 2:00 p.m. and in the evening between 6:00 p.m. and midnight.

### Parking

Parking spaces must be reserved in advance and availability is limited. Costs CHF 20.- per day. A parking lot is included with the Business Apartment.

### Public Transport

In immediate proximity (200 meters) there is a bus stop called Fluhmühle. The Emmenbrücke train station is approximately 2 km and the main Lucerne station is approximately 3 km away. Arrival and departure by public transport is possible without difficulty. [www.vbl.ch](http://www.vbl.ch) (Fluhmühle Luzern/Reussbühl); [sbb.ch](http://sbb.ch).

### Prices

See enclosed price list or at: [easy-living.ch](http://easy-living.ch)

We look forward to hearing from you, to receiving your reservation or to sending you an offer.

phone: +41 (0)41 250 46 48

mail: [info@easyliving.ch](mailto:info@easyliving.ch)

more online at [www.easy-living.ch](http://www.easy-living.ch)

Your easy – living Team Lucerne

